

# THE J. PAUL GETTY MUSEUM

17985 Pacific Coast Highway · Malibu, California 90265

Telephone: (213) 459-2306 · TWX: 910 343 6873

Mailing Address: P. O. Box 2112 · Santa Monica, California 90406

20 October 1983

Prof. Dr. Hartmut Hoffmann  
Seminar für Mittlere und Neuere  
Geschichte der Universität  
Nikolausberger Weg, 9c  
3400 Göttlingen  
WEST GERMANY

Dear Prof. Dr. Hoffmann:

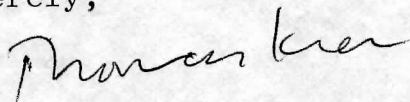
Thank you for your letter of October 3, 1983. The format for citing the Ludwig manuscripts is as follows:

The J. Paul Getty Museum,  
Malibu, California, Ms. Ludwig I 3

Please let me know if we may in any other way be of service.

With best regards,

Sincerely,



Thomas Kren  
Associate Curator of Paintings

TK/db

Maliki

THE FACTORY MIRROR

17000 Park Lane, California, U.S.A.  
Telephone: 442-1100  
Mailing Address: P.O. Box 1000, California, U.S.A.

20 October 1988

Prof. Dr. Hartmut Hoffmann  
Seminar für Litologie und Genetik  
71000 Göttingen  
West Germany

Dear Prof. Dr. Hoffmann:

Thank you for your letter of October 8, 1988. The  
format for citing the literature is as follows:

The J. Paul Getty Center

Please let me know if we can be of any other service.

With best regards,

Sincerely,



Associate Curator of Botany

TKA

THE FACTORY MIRROR

Rechnen Ms. 16

Avangelistar 27,2 x 19 cm

Hand A 2<sup>v</sup> - 8<sup>v</sup>, will. and 80<sup>n</sup> 3-6-7, jedu fells 87<sup>n</sup> - 88<sup>n</sup>,

89<sup>n</sup> 6 - 92<sup>v</sup>

Rechenman Hauptale (2<sup>v</sup>) E T

f x Z - ct A ~ r y

Hand B 9<sup>n</sup> - 86<sup>v</sup>, 93<sup>n</sup> - 170<sup>n</sup>

63<sup>v</sup>  
54<sup>v</sup> usw.  
43<sup>v</sup>  
12<sup>v</sup>

1/2 q, x A e v ~ N 17<sup>n</sup> 132<sup>n</sup>

keine ct-Liga-  
ten

21<sup>v</sup> 28<sup>n</sup>  $\left[ \begin{array}{c} 12 \\ 21, 157^n \end{array} \right]$  - q m<sup>3</sup> p  $\left[ \begin{array}{c} 1x \\ 34^v \end{array} \right]$  39<sup>v</sup>

Logik von relat.  
zahlen (von St  
abgeschien)

N 40<sup>n</sup> 45<sup>n</sup>  
52<sup>n</sup> 54<sup>n</sup>  
53<sup>v</sup>

v 46<sup>v</sup>  
54<sup>n</sup>  
57<sup>v</sup>

o 52<sup>n</sup>  
78<sup>v</sup>  
146<sup>n</sup>  
160<sup>n</sup>

o 77<sup>n</sup> 135<sup>n</sup>  
79<sup>n</sup> 149<sup>n</sup>  
80<sup>n</sup> usw.

13 157<sup>n</sup>

w 88<sup>n</sup> Silberstand 108<sup>n</sup>  
162<sup>n</sup> feigunt.

wormelweise  
20 Jahre!

Hand C 88<sup>v</sup> (23 Jahre) - 89<sup>n</sup> 6, 5 an Ran-

1/1000!  
Hauptrechen

b; o 2 e x 2 A N

170<sup>v</sup> 171<sup>n</sup> usw

103<sup>v</sup> in 2. hlym f. q-ia pater mavor me e hynzj ... (x)

A + B und St. Gallen, vermitt. Rechenai 2. Drittel 10. Jh



170-212 Notley

Hand D 172<sup>r</sup> - 196<sup>v</sup>

dt A x & Sillp-sund of q; r Q b;  
of 181<sup>v</sup> § 190<sup>r</sup> -

180<sup>r</sup> } 4 andere Hand

185<sup>r</sup> } 7 [ ] in alle temp andere Hand

Hand E 197<sup>r</sup> - 212<sup>v</sup>

& q, x - A f a (mit jauch gelbesem Band)

U Q

D + E andere und Vorans c. xi in.

Plutos: 88<sup>v</sup> (ea que facta) 176<sup>v</sup> (curavit) }  
 181<sup>v</sup> (in terram diximus) 200<sup>r</sup> (diximus de) } est. ✓  
 197<sup>v</sup> (locus est unicus)

Malik, Ludwig II 3

Q.v. Helmarshausen 22,8 x 16,2 cm

16<sup>v</sup> rote Rest  
von Lagerbuchst. A!

f. 9-16 - 1 Lage (9<sup>n</sup> letzte Kanontafel, 40<sup>v</sup> Matte,

10<sup>n</sup> Fresse, 10<sup>v</sup> Hand A)

33<sup>n</sup> rechts am Rand Supin, nicht von B

desp. 42<sup>v</sup> links a.R. " , desp. 130<sup>n</sup> rechts, 143<sup>n</sup> rechts, 151<sup>v</sup>

f. 51-52 in Hand in Lage

51<sup>n</sup> Hand B, 52<sup>v</sup> Hand A

Hand A auf 51<sup>v</sup> in Hand A auf einem

52<sup>n</sup>?

81-82 - 1 einzeln Doppelte

83-90 - Lage, nur 27 Zeichen pro Seite, kleiner gedruckt Hand B

83<sup>n</sup> Ende Cap. Ltr. 83<sup>v</sup> Ltr., 84<sup>n</sup> Fresse, 84<sup>v</sup> Hand A

Ltr. test auf 83<sup>v</sup> in Hand A

90<sup>v</sup> Lagerziffer L oder 98<sup>v</sup> keine Lagerziffer, vermuthl. abge-

schrieben, 106<sup>v</sup> Rest von Lagerziffer N am rechten Rand

114<sup>v</sup> Lagerziffer O, 122<sup>v</sup> Rest von Lagerziffer (P?)

123-134 Lage, 134<sup>v</sup> Lagerbuchst. O am rechten Rand,  
links abgewandt

+3 127<sup>n</sup> Schluss Cap. Jhr., eingetragener ab raus in Hand B

127<sup>v</sup> Jhr., 128<sup>n</sup> Fresse 128<sup>v</sup> Hand A, Jhr. test 127<sup>v</sup>  
in Hand A

142<sup>v</sup> Rest Lagerbuchst. R?, 150<sup>v</sup> Lagerbuchst. S (Lett,

160<sup>n</sup>-168<sup>v</sup> Cap. n. l. in Hand B, Cap. n. l. auf

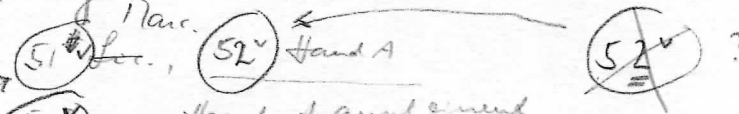
168<sup>v</sup> ab, unvollständig

und klar, in dem die Kanontafel fallen auf Kanontafeln<sup>n</sup>

die Kanontafeln (7<sup>v</sup>-9<sup>n</sup>) nicht voll von Hand A

die letzte (9<sup>n</sup>) reiner + konstanz beim ab 7<sup>v</sup>-8<sup>v</sup>

hindi fallen in Hand A  
(and)



Lagerziffer  
rot



Plustor L 2970/7 (4.6<sup>v</sup>) , L 2981/15 = fol. 14<sup>r</sup> (Gleandro sacorany  
 L 2976/1 (= fol. 31<sup>r</sup>) h. dr. s. c. o ; L 2977/13 = fol. 78<sup>v</sup> (In die s. c. o Partecost)

Maliki Sy. Ludwig V2 Sakramentar d. Hf. v. Aremby.

26,5 x 19 cm  
 = f. 2<sup>r</sup> - 7<sup>v</sup>  
 p. 1.3<sup>r</sup> - 12<sup>v</sup> Kalender , f. 13<sup>r</sup> - 18<sup>r</sup> Komputistikalen  
 p. 14 - 22 Nachträge 2. H. II. J. Tegernsee?  
 = f. 8<sup>v</sup> - 12<sup>r</sup>  
 f. 9-12 nachträge. einfl. r. B. m. n

Fida  
 an der roten Nummerkel  
 f. 61<sup>r</sup>, 64<sup>r</sup>

Hand A fol. 2<sup>r</sup> - 78<sup>r</sup>, 14<sup>r</sup> - 17<sup>v</sup>, 22<sup>v</sup> - 28<sup>v</sup>

g d t u v r e y r a - a N H A l y a A

A q: b

q; n e a - c Q s f x f P r y - a a v N

Golden A mit T S D (f. 17<sup>r</sup>, 'rechten')

Tegernsee  
 (cod. Regensburj)

Hand B fol. 29<sup>r</sup> - 157<sup>r</sup> 8. 8

g a - a q; s A y d r r b; a e m n n<sup>g</sup>

N v l R F A G

A

N<sup>r</sup> x vt a S C Q I l z i b p

rote Partica T O x U N v F

fol. 87<sup>v</sup> Festivitas S<sup>c</sup>i Bonifacii anzeigend und die große Initialen; fol. 103<sup>v</sup>  
in uatē s<sup>c</sup>i Marci: + s<sup>c</sup>i eis (wie Nummer!) angeordnet; im Jahr. und  
Alban

fol. 157<sup>r</sup> f. 8 - 160<sup>v</sup> Fund drucklos, denn  
wird in den. H. wie die Notlage von

fol. 8<sup>v</sup> 195. - 7<sup>v</sup> 027

Köln? Niederlande? Namen? Hildesheim.

f. 21<sup>v</sup> Golddruck auf Papier schon zu bearbeiten, da  
leicht durch Golddruck wenig regulierung, der VD fol. 21<sup>v</sup>  
jeder falls regulierungsgemäß (nicht allerdings wie ein Feindkrieger  
auf der Seite + überlässt im Fol. lang der Gold- + Fassung f. 18<sup>r</sup> - 22<sup>r</sup>

Historischer Text aus d. Regensburger, gold mit roter Linierung  
+ mit einem schwarzen Folie

f. 75<sup>v</sup> in einem Lyoba, f. 26<sup>r</sup> in Libra von: et beato Bonifacio martyri

In kalenda f. d. gregorij

<sup>Münster</sup>  
1077 c. a. 21. 3. Dep S<sup>c</sup>i Benedicti abb f. 3<sup>r</sup>

f. 3<sup>v</sup> 23. 4. S<sup>c</sup>i Georgij: un̄ + n̄ Adalberti ep̄i et un̄

f. 4<sup>v</sup> 5. 6. Panno S<sup>c</sup>i Bonifacii: archiep̄i + un̄ in vester Reichs  
(der auch nicht vorkommt), de p̄i arch 4. 6. in schwarz-braum  
Tinte: Vigil s<sup>c</sup>i Bonifacii novembris eius

21. 6. S<sup>c</sup>i Albani un̄

f. 5<sup>r</sup> 4. 7. Odalrici ep̄i + conf

11. 7. Transi n̄i Benedicti abb

f. 6<sup>r</sup> 22. 9. Marci et Marcellini + Numeriani ep̄i et un̄

24. 9. S<sup>c</sup>i Loui: un̄. et Concepti n̄. Johannis bapt

28. 9. Lyobae virg + s<sup>c</sup>i Wenzeslai un̄

f. 6<sup>v</sup> 11. 10. Recordabo factu

16. 10. Gelli conf + S. Lulli archiep̄i

f. 7<sup>r</sup> 11. 11. Martini ep̄i + conf. + n̄i Remigij un̄

f. 7<sup>v</sup> 1. 12. Ordinat n̄i Bonifacii ep̄i + un̄ + Candidi virg

n. f. un̄ Katalog von d. c. / Platze 1. 5, 223

nicht not f. 3<sup>v</sup> 30. 4. Quirini ep̄i



Paliké

Sy. Lidrog XII 3

26 x 22,5 cm im videm hundredet freper engleket. Ex  
libris Imperatoris Theodorici s. Maximus 17. J. (Petreus?)  
fol. 10<sup>r</sup> - 15<sup>v</sup> Kalend. 9. J.

f. 10<sup>r</sup> 13. Jan. Medley Agricis ep: tr 37 13. J.

f. 11<sup>v</sup> 1. Apr. " Ordinatio Hedemolt: ep: 9./10. J.

22. " (obit) ingram 9./10. J.

f. 12<sup>r</sup> 29. Nov " Nat Sa Maximus Trever  
rote Rustica, chos verkapf

f. 12<sup>v</sup> 20. Jan Medley hildouicis impuato obit 9. J.

f. 13<sup>r</sup> 12. J. Obi. 7. Hi alcaid pber 9./10. J.

selbsthand?

f. 25. J. Metai sū Jacob. Zebden. frs sū  
Jhannis evangelistae + sū germani ep: et iusseron  
9. J.

f. 13<sup>v</sup> 28.-31. Ag. an Paul Medley Obi. 7. Lidouicis rex  
bairarionum 9. J.

f. 14<sup>v</sup> 13. Okt. Medley Treveris dedicatio basilice sū  
Jhannis evangeliste et translato corporum beatorum  
non confessorum atque paterum Maximus  
Agricis atque Nicetii in eandem eccliam. Facta  
sunt autem hec anno ab incarnatione dñi  
DCCCCXII indictione prima

f. 15<sup>r</sup> 7. Nov. Dep Medley Dep sū Willibrordi ep:  
10. J.

f. 14<sup>v</sup> 26. Okt. Notē sū amandi ep: et ad eccliae ipsius

f. 15<sup>r</sup> 17. Nov. et notē pateris unī supiori

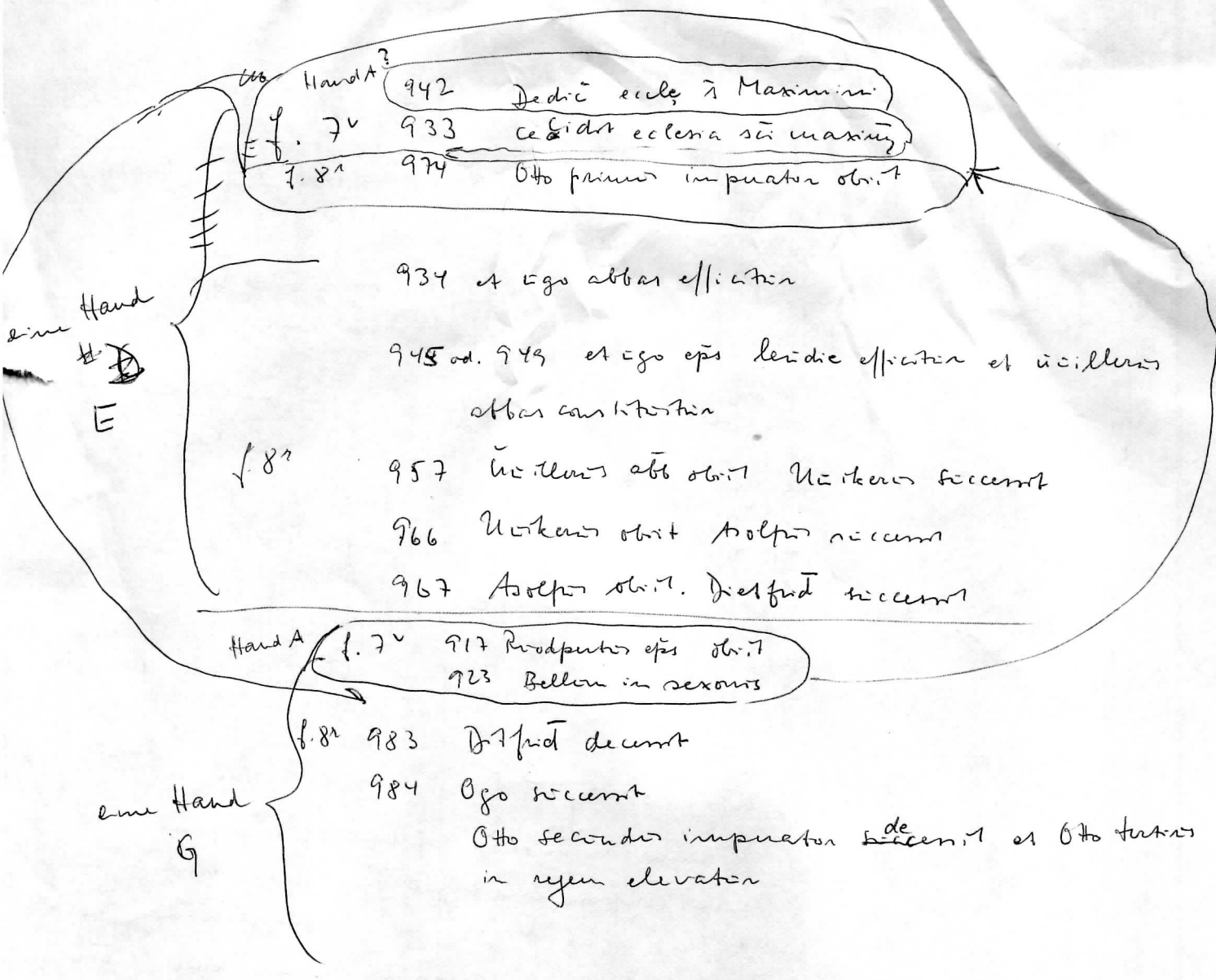
f. 12<sup>r</sup> 13. Mar Dedicatio eccliae beatae Mariae ad martyres  
huc Medley! offusen an Pau bezoge!

fol. 2<sup>v</sup> - 9<sup>r</sup> 19-folium zyklus 532 - 1063

an der Ränder am abstr. Aufzeichnung

9. Jh. angelegt

f. 4<sup>v</sup> DCCVIII princeps Francorum drogo obiit



Hand H f. 8<sup>r</sup> 987 Hogo abbas obiit. Fulmanus succent

Hand F { fol. 8<sup>r</sup> 941? 941 Otto inuon rex efflicten et eclipsis solis facta est  
968 Idē Otto impuator

Hand for bil Hand B f. 7<sup>v</sup> 931 Proodpater Ordinator ep̄

Malibi

Lidung 3

Hand D

fol. 87<sup>v</sup> 945 Hoc igitur anno xvii kl octob̄ hora prima  
uocis apparuit signum in celo in septentrionali  
parte quod signum quidam antiqui dixerunt esse  
dicebant // p̄hor̄ uell. uel p̄ de uocis p̄hor̄  
Anake. ob. d. l. (Remus v. v.)

fol. 7<sup>r</sup> 883

Northmanni tunc uen̄t cum uisitatione maxima in  
vastante galiam cremerunt

888 Karolus rex fr̄ karoloman̄i de p̄p̄ter + anulo  
rex constantin

899 Arnolfo rex ob̄

900 Zuentbold a fr̄s interfectus

p. 7<sup>v</sup>

924 Rodem anno karolus rex custodia datus

// (Rodem anno uel p̄ cil q̄t Bellon in Sexon  
de p̄ter, ob̄ 923!)

929 Gisalbertus rex furlinge dicit uxorem

930 Otto rex ab anglis dicit uxorem et carolus  
rex ob̄ in custodia

934 Cronus manadus cum fr̄ Maximim

935 ob̄ Hildicus laicus

937 Henricus rex ob̄. Otto filius eius occidit. Arnold  
dux baccarionum ob̄. Filde monast̄ crematus  
et rex Otto hungros uque metharum (?)  
persequitur

937 Wolmarus laicus ob̄ (?)

↑  
verbaliter von Henricus rex ob̄ cōm!

Hand C



chem. Malibu, Ludwig xii 4

66

\$20.000. -

- 36 AMBROSIIUS THEODOSIUS MACROBIUS, COMMENTARII IN SOMNIUM SCIPIONIS, IN LATIN WITH SOME WORDS IN GREEK, WITH AN EXTRACT FROM MARCUS TULLIUS CICERO, SOMNIUM SCIPIONIS, IN LATIN, DECORATED MANUSCRIPT ON VELLUM [SOUTHERN GERMANY, SECOND HALF OF THE TENTH CENTURY]

32 leaves, lacking one gathering (8 leaves) after f. 8 and a few leaves at end (in the supplementary text), else complete, gatherings of 8 leaves with alphabetical signatures in centre of lower margins of last leaves in capitals between clusters of 3 or 4 dots, 37 lines, written-space 225mm. by 130mm., ruled in blind with double vertical bounding-lines, text beginning above top ruled line, written in dark brown ink in a handsome small slightly sloping late Carolingian minuscule with tall clubbed ascenders, Greek words in capitals, headings and colophons in handsome calligraphic capitals, textual capitals which happen to occur at the beginning of lines are set out into the margins, LARGE PAINTED INITIALS in dark brown ink on ff. 1 (three), 15, 23v, 26, 30v (two) and 31v, FOUR MARGINAL DIAGRAMS (ff. 4, 4v, 11v and 16v) and SEVEN LARGE OR FULL-PAGE ILLUSTRATIONS AND DIAGRAMS, INCLUDING A WORLD MAP (ff. 12v, 14v, 19, 20v, 22, 22v and 23), glossed in at least one (probably two) contemporary hands and a few sidenotes in a late fifteenth- or sixteenth-century hand, many contemporary 'Nota' signs in margins and other letters including 'D.M.' ('Digna Memoriae'), some original flaws in the vellum with holes around which the scribe has written on ff. 1, 2, 10 and 22, vertical blind ruling on f. 16 has partly scored through the leaf, some stains especially on f. 1 and some thumbing in outer margins, extremities of sidenotes fractionally cropped, other signs of use but overall in very fine condition for a thousand-year-old book, wide margins amply preserving the prickings, nineteenth-century German blind-stamped sheep over pasteboards, paper endleaves, small repairs to spine and corners, fitted cloth case with dark blue morocco spine gilt (268mm. by 193mm.)

A HANDSOME OTTONIAN MANUSCRIPT OF A MAJOR CLASSICAL TEXT

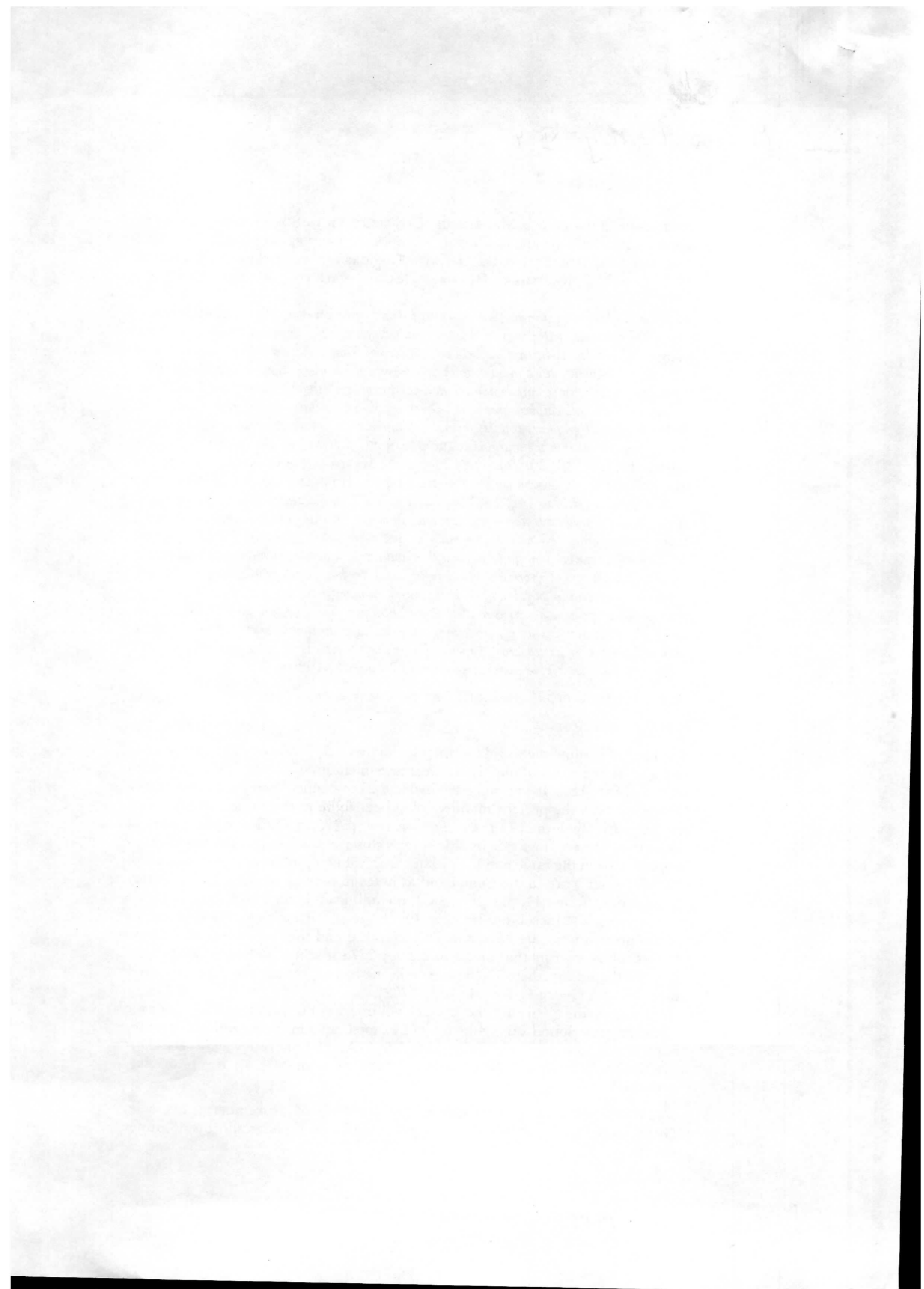
PROVENANCE

(1) From the same medieval German library as B.L. Harley 2772, a composite volume of fragments of mainly classical texts including another (very imperfect) copy of Macrobius. It was suggested by Dr. Barker-Benfield that the contemporary annotations in the present manuscript appear to be in the same hand as those in the Harley volume (*Texts and Transmission*, p. 225, n. 6). The opportunity of examining the volumes side by side reveals closer relationships. The world maps appear to be in the same hand. The late medieval notes in the present manuscript (ff. 3, 31v, etc.) are in the same hand as notes in several sections of the Harley manuscript (ff. 26v, 44, 81v, 90v, etc.), including a title note on f. 44 listing texts in the volume (Macrobius, Juvenal, Ovid, etc.). Furthermore the dimensions of the present book are almost exactly identical and the dampstain on f. 1 here so uncannily mirrors that on f. 1 of Harley 2772 that it may be the books were literally bound together. The Harley volume has no known provenance earlier than Johann Georg Graevius (1632-1702).

It is tantalising then that the present volume has an undeciphered monastic ownership inscription. Along the top of f. 1 (apparently in the seventeenth-century hand which added the title 'Fragmenta Virgilii' on f. 1 of Harley 2772) is a short inscription beginning 'Monasterii S. g[?] or T or even M] . . . Reg.[?] or Aug, perhaps]'.

(2) Hans Albrecht von Derschau (1755-1824), of Nuremberg; his sale, Nuremberg, 1 August 1825, lot 6 (this number on a paper slip inside upper cover).

Sotherby 6 Dec. 1988



# THE J. PAUL GETTY MUSEUM

17985 Pacific Coast Highway • Malibu, California 90265

Telephone: (213) 459-2306 • TWX: 910 343 6873

Mailing Address: P. O. Box 2112 • Santa Monica, California 90406

20 October 1983

Prof. Dr. Hartmut Hoffmann  
Seminar für Mittlere und Neuere  
Geschichte der Universität  
Nikolausberger Weg, 9c  
3400 Göttlingen  
WEST GERMANY

Dear Prof. Dr. Hoffmann:


Thank you for your letter of October 3, 1983. The format for citing the Ludwig manuscripts is as follows:

The J. Paul Getty Museum,  
Malibu, California, Ms. Ludwig I 3

Please let me know if we may in any other way be of service.

With best regards,

Sincerely,



Thomas Kren  
Associate Curator of Paintings

TK/db

Maliki

20 October 1983

Prof. Dr. Hartmut Hoffmann  
Seminar für Litologie und Petrologie  
Postfach 10 15 51  
D-8400 Göttingen  
West Germany

Dear Prof. Dr. Hoffmann:

Thank you for your letter of October 2, 1983. The  
format for citing the Luvisol characteristic is as follows:

The V. Paul Gottschalk

Please let me know if we may do any other way to  
service.

With best regards,

Sincerely,

*[Handwritten signature]*

Associate Curator of Botany

TRAD



Malibu Ms. 16

Evangelistar 27,2 x 19 cm

Hand A 2<sup>v</sup> - 8<sup>v</sup>, well. and 80<sup>n</sup> 2-6-7, jedu fells 87<sup>n</sup> - 88<sup>n</sup>,

89<sup>n</sup> 6 - 92<sup>v</sup>

Reclmanu Kupale (2<sup>v</sup>) E T

f x L - ct A ~ r y

Hand B 9<sup>n</sup> - 86<sup>v</sup>, 93<sup>n</sup> - 170<sup>n</sup>

63<sup>v</sup>  
54<sup>v</sup> cm.  
43<sup>v</sup>  
12<sup>v</sup>

1/2 q, x A e v ~ N 17<sup>n</sup> 132<sup>n</sup>

21<sup>v</sup> 28<sup>n</sup>  $\left[ \begin{array}{c} \beta \\ \beta \end{array} \right] b_2 - q m^2 p \left[ \begin{array}{c} 1x \\ 34v \end{array} \right] \bar{t} 39<sup>v</sup>$

N 40<sup>n</sup> 45<sup>n</sup> v 46<sup>v</sup> 52<sup>n</sup> 54<sup>n</sup> 57<sup>n</sup> 59<sup>n</sup> 53<sup>v</sup>  
W 88<sup>n</sup> Silloß-s hand 108<sup>n</sup> 162<sup>n</sup> feyunt.  
D 52<sup>n</sup> 78<sup>v</sup> 146<sup>n</sup> 160<sup>n</sup>  
Q: 77<sup>n</sup> 135<sup>n</sup> 79<sup>n</sup> 149<sup>n</sup> 80<sup>n</sup> cm.  
B 157<sup>n</sup>

ke me ct-figa-  
ten  
Logikun reletu  
reltu (non st  
afgesehen)

wormelweise  
20 felle!

Hand C 88<sup>v</sup> (23 felle) - 89<sup>n</sup> f. 5 an Ran-

b; ox e x 2 A N

1/100ms!  
Hauptreich

170<sup>v</sup> 171<sup>n</sup> cm

103<sup>v</sup> in 2. hysm f. qia pater maior me ē hysm f. - x (x?)

A + B und St. Jellen, wormel. Reclman 2. Drittel 10. Jh.



170-212 Neulhey

Hand D 172<sup>r</sup> - 196<sup>v</sup>

dt A x & Silb-sound of q, r Q b;  
of 181<sup>v</sup> & 190<sup>r</sup> -

180<sup>r</sup> } 4 andere Hand

185<sup>r</sup> } 7 [ ] in alle temp andere Hand

Hand E 197<sup>r</sup> - 212<sup>v</sup>

& q, x - A f a (mit jauchgelbem Band)

U Q

D + E andere und Vorans c. xi in.

Platon: 88 <sup>v</sup> (ea que facta)	176 <sup>v</sup> (curavit)	} est. ✓
181 <sup>v</sup> (in terram diximus)	200 <sup>r</sup> (dicitur de)	
197 <sup>v</sup> (locus est unicus)		

# Malik, Ludwig II 3

Q.v. Helmanstein 22,8 x 16,2 cm

16<sup>v</sup> an R. Rest | f. 9-16 - 1 Lage (9<sup>n</sup> letzte Kanontafel, 10<sup>v</sup> Matte,  
im Lagerbuchst. A! 10<sup>n</sup> Fresse, 10<sup>v</sup> Hand A)

33<sup>n</sup> rechts am Rand Supinuz, und in B  
dage 42<sup>v</sup> links a.R. " , dazuf. 130<sup>n</sup> rechts, 143<sup>n</sup> rechts, 151<sup>v</sup>

f. 51-52 in Hand in Lage



51<sup>n</sup> Hand B ; 51<sup>v</sup> Marc., 52<sup>v</sup> Hand A

Marc. text an) 51<sup>v</sup> in Hand + and a merid



81-82 - 1 einzeln Doppelte.

88-90 - Lage, mit 27 Zeilen pro Seite, klein gedruckt Hand B

83<sup>n</sup> Ende <sup>Cap. L.</sup> Marc. 83<sup>v</sup> Lic., 84<sup>n</sup> Fresse, 84<sup>v</sup> Hand A

Lic. text an) 83<sup>v</sup> in Hand A

90<sup>v</sup> Lagerziffer L. in Hand 98<sup>v</sup> keine Lagerziffer, v. m. H. abg.

rechten, 106<sup>v</sup> Rest in Lagerziffer N an rechten Rand

114<sup>v</sup> Lagerziffer O, 122<sup>v</sup> Rest von Lagerziffer (P?)

123-134 Lage, 134<sup>v</sup> Lagerbuchst. O an Permen Rand,  
links abgewandt

+ 127<sup>n</sup> Sillup <sup>Cap. H.</sup> Lic., eng gedruckt abwärts in Hand B

127<sup>v</sup> Joh., 128<sup>n</sup> Fresse 128<sup>v</sup> Hand A, Joh. text 127<sup>v</sup>  
in Hand A

142<sup>v</sup> Rest Lagerbuchst. (R?), 150<sup>v</sup> Lagerbuchst. S (left)

160<sup>n</sup>-168<sup>v</sup> Cap. in Hand B, Cap. Folie beidseitig

168<sup>v</sup> ab, er vollständig

und klar, in dem die Kanontafel fallen auf Kanontafel 1<sup>v</sup>-8<sup>v</sup>,

die Kanontafel (1<sup>v</sup>-9<sup>n</sup>) muss links in Hand A

die letzte (9<sup>n</sup>) rechts + konstanz beim ab 1<sup>v</sup>-8<sup>v</sup>,

links fallen in Hand A  
(and)

Lagerziffer  
rot



Platon L 2970/7 (f. 6<sup>v</sup>), L 2981/15 = fol. 14<sup>r</sup> (Quando sacerdos  
 L 2976/1 (= fol. 31<sup>r</sup>) h. d. s. c. o. ; L 2977/13 = fol. 78<sup>v</sup> (In die s. c. o. Partecost)

**Mal: br**

Sy. Ludwig V2 Sakramentan d. Hf. v. Aremby.

26,5 x 19 cm  
 = f. 2<sup>r</sup> - 7<sup>v</sup>  
 p. ~~f. 3<sup>r</sup>~~ - 12<sup>v</sup> Kalender, f. 13<sup>r</sup> Komp. Tinkelen  
 f. 14 - ~~15~~ 22 Nachtrag 2. H. 11. Jh. Tegernsee?  
 = f. 8<sup>v</sup> - 12<sup>r</sup>

f. 9-12 nachtrag. einprägter Binn

**Frida**

Hand A fol. 2<sup>r</sup> - 78<sup>r</sup>, 14<sup>r</sup> - 17<sup>v</sup>, 22<sup>v</sup> - 28<sup>v</sup>

g æ ŷ v 7 ε y r œ - œ N H ft l y æ A

A q: b

q; n ε a - c Q s I x f P r y - œ œ v N

golden A mit T v d (f. 17<sup>r</sup>, 'celten')

and rote Minuskel  
 f. 61<sup>r</sup>, 64<sup>r</sup>

**Tegernsee**  
 (Cod. Regensb.)

Hand B fol. 29<sup>r</sup> - 157<sup>r</sup> 7. 8

g æ - a q; s A ŷ d r r b; œ ε m<sup>n</sup> n<sup>?</sup>

N Y L R F A G

A

N<sup>n</sup> x v œ S C Q - l l z i b p

rote Rotica T œ y N v F

fol. 84<sup>v</sup> festinat sc̄i Bonifacii anzeigend und die große Initialen; fol. 103<sup>v</sup>  
zu walt sc̄i Marci: + sc̄i ev̄ (wie immer!) angeordnet; im Jahr und  
Alban

fol. 157<sup>r</sup> f. 8 - 160<sup>v</sup> Zwei drucklos, denn  
wird in den. H. wie die Nachträge von

fol. 8<sup>v</sup> 299. - f̄ 024  
Kite? Niederkeit? Namen? Hildesheim.

f. 21<sup>v</sup> Soldat ist auf Tempel oben zu besetzen, da  
Leist die Goldstücke wenig zahlungsfähig, der VD fol. 21<sup>v</sup>  
jeder falls eigentl. - teigensend (nicht allerdings wie ein Fremdkörper  
auf die Seite + oben liegt im fol. lang der Gold- + Bronze f. 18<sup>r</sup> - 22<sup>r</sup>  
Dunkler Teigersee od. Regent, gold mit roten Linien  
a mit einem d. blauen Füll

f. 75<sup>v</sup> Hin Remun Lyoba, f. 26<sup>r</sup> in Libra von: et beato Bonifacio martyri

In Kalender f. 1. d. f. 2. d. f. 3. d. f. 4. d. f. 5. d. f. 6. d. f. 7. d. f. 8. d. f. 9. d. f. 10. d. f. 11. d. f. 12. d. f. 13. d. f. 14. d. f. 15. d. f. 16. d. f. 17. d. f. 18. d. f. 19. d. f. 20. d. f. 21. d. f. 22. d. f. 23. d. f. 24. d. f. 25. d. f. 26. d. f. 27. d. f. 28. d. f. 29. d. f. 30. d. f. 31. d.

<sup>Minut</sup>  
rot c. a. 21. 3. Dep̄ sc̄i Benedicti abb̄ f. 3<sup>r</sup>

f. 3<sup>v</sup> 23. 4. sc̄i Georgii un̄ + sc̄i Adalberti ep̄i et un̄

f. 4<sup>v</sup> 5. 6. Panno sc̄i Bonifacii archiep̄i + un̄ in rotis Rebus  
(die nicht nicht vorhanden) , d. 7. und 4. 6. in schwarz-braun  
Tinte: Vogel sc̄i Bonifacii sacerdotis eius

21. 6. sc̄i Albani un̄

f. 5<sup>r</sup> 4. 7. Odalrici ep̄i + un̄

11. 7. Trans̄ sc̄i Benedicti abb̄

f. 6<sup>r</sup> 22. 9. Marci et Marcellini + Numeriani ep̄i et un̄

24. 9. sc̄i Loui un̄. et Concept̄ sc̄i Johannis bapt̄

28. 9. Lyobae virḡ + sc̄i Wenzeslai un̄

f. 6<sup>v</sup> 11. 10. Recordato frat̄

16. 10. Gallii un̄ + S. Lilli archiep̄i

f. 7<sup>r</sup> 11. + 11. Martini ep̄i + un̄ + sc̄i Nanni un̄

f. 7<sup>v</sup> 1. 12. Odonat̄ sc̄i Bonifacii ep̄i + un̄ + Candidi virḡ

in dem Katalog von. d. d. / Platze 1. S. 223

nicht rot f. 3<sup>v</sup> 30. 4. Anirini ep̄i

Palin

Sy. Lindreg XII 3

26 x 22,5 cm in vordem hundertel Freyer eingeklebt. Ex  
libris Imperator Maximus 5. Maximi 17. J. (Petrius?)  
f. 10<sup>r</sup> - 15<sup>v</sup> Kalend. 9. J.

f. 10<sup>r</sup> 13. Jan. Medley Agrivii ep: 13. J.

f. 11<sup>v</sup> 1. Apr. " Ordinatio Hedemolte ep: 9./10. J.

22. " (Obit) ingram 9./10. J.

f. 12<sup>r</sup> 29. Mai " Nat. S. Maximus Trevor  
rote Rustica, chos verkapf

f. 12<sup>v</sup> 20. Juni Medley hlidomica in pucta Obit 9. J.

f. 13<sup>v</sup> 12. Juli " Obit. Hi alcaud pber 9./10. J.

selbsthand?

f. 25. Juli " Notat. S. Jacobi. Zuber. f. 15. S. S.  
Klaun. evangelist. + S. geman. ep: et ifensor  
9. J.

f. 13<sup>v</sup> 28.-31. Aug. an Rand Medley Obit. Lidomica res  
bairationem 9. J.

f. 14<sup>v</sup> 13. Okt. Medley Trevors dedicatio basilice S. S.  
Klaun. evangeliste et translato corporum beatorum  
non confessorum atque pacifum Maximus  
Agrivii atque Nicetii in eandem eccliam. Facta  
sunt autem hec anno ab incarnatione d. n. i.  
DCCCCXLII indictione prime

f. 15<sup>r</sup> 7. Nov. Dep. Medley Dep. S. Vithibronde ep:  
10. J.

f. 14<sup>v</sup> 26. Okt. Notat. S. amandi ep: et ad eccliam ipsam

f. 15<sup>r</sup> 17. Nov. et notat. patris n. i. supri:

f. 12<sup>r</sup> 13. Mai Dedicatio ecclie beate Marie ad martyrum  
kur Medley! offuben an Ran bezuge!

fol. 2<sup>v</sup> - 9<sup>r</sup> 19-jolus tyklus 532 - 1063 9. jr. anglyst,  
an der Ränder umschribt. Aufgeschribt

f. 4<sup>v</sup> DCCVIII principis Francorum drogo obit

Hand A? f. 7<sup>v</sup> 942 Dedicē eccle. s̄ Maximini  
933 Cēdidit ecclesia s̄i Maximij  
f. 8<sup>r</sup> 974 Otto primus impuator obit

934 et ego abbas efflicten  
945 od. 949 et ego ep̄s leidie efflicten et uicillus  
abbas canthortia  
f. 8<sup>r</sup> 957 uicillus abb̄ obit. Nūtkens succent  
966 Nūtkens obit. Aseper succent  
967 Aseper obit. Dietfrid succent

Hand E  
# D  
E

Hand A f. 7<sup>v</sup> 917 Rodpertus ep̄s obit  
923 Bellon in sexons

Hand G

f. 8<sup>r</sup> 983 Dietfrid deunt  
984 Ego succent  
Otto secundus impuator <sup>de</sup> succent et Otto tertius  
in regem elevaton

Hand H

f. 8<sup>r</sup> 987 Hogo abbas obit. Folmaris succent

Hand F

f. 8<sup>r</sup> 941? 941 Otto inuon rex efflicten u edipus solis facta est  
968 Idē Otto impuator

Hand for side  
Hand B

f. 7<sup>v</sup> 931 Rodpertus Ordinatros ep̄s



Hand D

fol. 87<sup>v</sup> 945 Hoc igitur anno xvii kl octobis hora prima  
 nocte apparuit signum in celo in septentrionali  
 parte quod signum quidam antea dicit esse  
 dicebant // perhorum vell. cum se de viciis plebis  
 Anabel. ibi: dicit (Thannovv.)

fol. 7<sup>r</sup> 883 Northmanni tenuerunt unam mansuetudinam maximam  
 vastantes gallicam crementem  
 888 Karolus rex frater karolomanii depergitur + anolfus  
 rex constantinensis

899 Arnolfus rex ob

900 Zuentbold a suis interficitur

fol. 7<sup>v</sup> 924 Rodem anno karolus rex custodie datus  
 !! (Rodem anno unguis ad bellum in Sexon  
 de peder, anno 923!)

929 Gualbertus dux furligie dedit uxorem

930 Otto rex ab anglis dedit uxorem et carolus  
 rex ob in custodia

934 Corvus magnadusum frater Maximian

935 Ob Hildemar laicus

937 Hildemar rex ob. Otto filius eius occidit. Arnoldus  
 dux baccarionum ob. Fides mansuetudinam  
 et rex otto longros equis mettisam (!)  
 persequitur

937 Woldmarus laicus ob it (!).

↑  
 "verbal" von Hildemar rex ob carolus!

Hand C

dem Trümmerberge 937

2. Hand 942

(3.) Ordnung Rindpferd 931

4. 945

die Jahreszahl steht wie ~~in~~ ~~der~~ ~~Hand~~ ~~von~~ ~~den~~ ~~Handen~~.  
Nur im Anfang der feststehenden

chem. Malibu, Ludwig xii 4

£20.000. -

- 36 AMBROSIUS THEODOSIUS MACROBIUS, COMMENTARII IN SOMNIUM SCIPIONIS, IN LATIN WITH SOME WORDS IN GREEK, WITH AN EXTRACT FROM MARCUS TULLIUS CICERO, SOMNIUM SCIPIONIS, IN LATIN, DECORATED MANUSCRIPT ON VELLUM [SOUTHERN GERMANY, SECOND HALF OF THE TENTH CENTURY]

32 leaves, lacking one gathering (8 leaves) after f. 8 and a few leaves at end (in the supplementary text), else complete, gatherings of 8 leaves with alphabetical signatures in centre of lower margins of last leaves in capitals between clusters of 3 or 4 dots, 37 lines, written-space 225mm. by 130mm., ruled in blind with double vertical bounding-lines, text beginning above top ruled line, written in dark brown ink in a handsome small slightly sloping late Carolingian minuscule with tall clubbed ascenders, Greek words in capitals, headings and colophons in handsome calligraphic capitals, textual capitals which happen to occur at the beginning of lines are set out into the margins, LARGE PAINTED INITIALS in dark brown ink on ff. 1 (three), 15, 23v, 26, 30v (two) and 31v, FOUR MARGINAL DIAGRAMS (ff. 4, 4v, 11v and 16v) and SEVEN LARGE OR FULL-PAGE ILLUSTRATIONS AND DIAGRAMS, INCLUDING A WORLD MAP (ff. 12v, 14v, 19, 20v, 22, 22v and 23), glossed in at least one (probably two) contemporary hands and a few sidenotes in a late fifteenth- or sixteenth-century hand, many contemporary 'Nota' signs in margins and other letters including 'D.M.' ('Digna Memoriae'), some original flaws in the vellum with holes around which the scribe has written on ff. 1, 2, 10 and 22, vertical blind ruling on f. 16 has partly scored through the leaf, some stains especially on f. 1 and some thumbing in outer margins, extremities of sidenotes fractionally cropped, other signs of use but overall in very fine condition for a thousand-year-old book, wide margins amply preserving the prickings, nineteenth-century German blind-stamped sheep over pasteboards, paper endleaves, small repairs to spine and corners, fitted cloth case with dark blue morocco spine gilt (268mm. by 193mm.)

A HANDSOME OTTONIAN MANUSCRIPT OF A MAJOR CLASSICAL TEXT

PROVENANCE

(1) From the same medieval German library as B.L. Harley 2772, a composite volume of fragments of mainly classical texts including another (very imperfect) copy of Macrobius. It was suggested by Dr. Barker-Benfield that the contemporary annotations in the present manuscript appear to be in the same hand as those in the Harley volume (*Texts and Transmission*, p. 225, n. 6). The opportunity of examining the volumes side by side reveals closer relationships. The world maps appear to be in the same hand. The late medieval notes in the present manuscript (ff. 3, 31v, etc.) are in the same hand as notes in several sections of the Harley manuscript (ff. 26v, 44, 81v, 90v, etc.), including a title note on f. 44 listing texts in the volume (Macrobius, Juvenal, Ovid, etc.). Furthermore the dimensions of the present book are almost exactly identical and the dampstain on f. 1 here so uncannily mirrors that on f. 1 of Harley 2772 that it may be the books were literally bound together. The Harley volume has no known provenance earlier than Johann Georg Graevius (1632-1702).

It is tantalising then that the present volume has an undeciphered monastic ownership inscription. Along the top of f. 1 (apparently in the seventeenth-century hand which added the title 'Fragmenta Virgilii' on f. 1 of Harley 2772) is a short inscription beginning 'Monasterii S. gl[?] or T or even M] . . . Reg. [?] or Aug, perhaps]'

(2) Hans Albrecht von Derschau (1755-1824), of Nuremberg; his sale, Nuremberg, 1 August 1825, lot 6 (this number on a paper slip inside upper cover).

Sotherby 6 Dec. 1988

