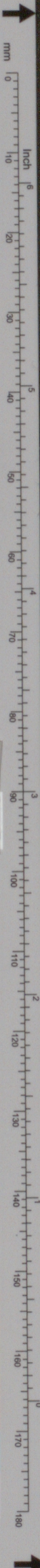
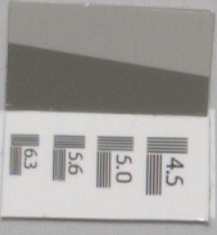


Fragment of a parchment document with handwritten text in a medieval script, possibly Gothic or Carolingian minuscule. The text is arranged in approximately 25 lines, though many are partially obscured by damage and tears. The parchment is heavily stained and discolored, particularly at the top and bottom edges. The script is dense and appears to be a formal or legal document.



Patch Reference numbers on UTT



10 09 03 02 01 C7 B7 A7 C8 B8 A8 C9 B9

the scale towards document