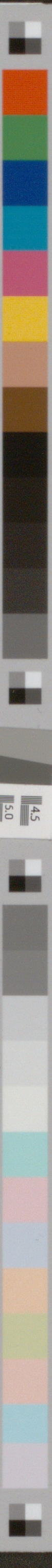
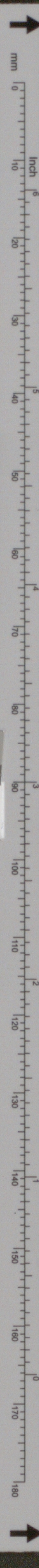


in succisa igni. et iux
s. ductas esse captiu
s qui erat cum eo uoces
deficerent in eis lac
dauid captiuq; duct
belures. et abigail uxore
is e ualde. Volebat e
ra erat anima uniuersa
filiab? Confortat est
et ait adabiathar sac
plica adme ephod. t
hod addauid. Et cōsu
ersequar annū latrum
os. Dixitq; ei. Persequ
prehendes eos. et excuti
l ipse et sexcenti uiri
nt usq; ad torrentē
stiterunt. Persecutus
ngenti uiri. Substit
transire n̄ potuerant
erū uirū egyptiū in
ad dauid. Dederuntq;
biberā aquā. et frag
et uias ligaturas uir
reūsus ē spē eius et
comederat panē trū
biberat aquā. D
es tu. ut unde. et
uer egypti ego sum
et. Dereliquit autē r
cepi mūdus terci. Si
australē partē ceret
meridiē chaleb et sic
u. Dixitq; ei dauid. J
cuneū? Qui ait. Jura
us me. et intradas me
ā te adcuneū istū. I
asset eū. ecce illi disc
erse t̄re. comedentes
ū celebrantes diē p
ceperant de t̄ra ph
. Et percussit eos dauid
peram. alteri die. et
quadringenti uiri
rant camelos et fuger
mia que tulerant a
et cetera. nec det



C1 B1 A1 C2 B2 A2 B5 A5 20 18 17 16 11
Patch Reference numbers on UTT

Image Engineering Scan Reference Chart TE263 Serial No. 4.5 5.0 5.6 6.3
10 09 03 02 01 C7 B7 A7 C8 B8 A8 C9 B9
the scale towards document