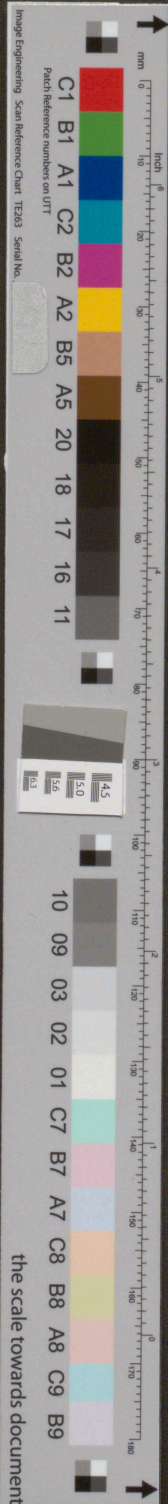


Fragment of a papyrus scroll with approximately 25 lines of ancient Greek text. The script is a cursive hand, likely from the Hellenistic or Roman period. The text is partially obscured by the fragment's irregular edges and some staining.

Fragment of a papyrus scroll with approximately 25 lines of ancient Greek text. The script is a cursive hand, likely from the Hellenistic or Roman period. The text is partially obscured by the fragment's irregular edges and some staining.



Fragment of an ancient papyrus scroll with two columns of handwritten text in a cursive script. The text is densely packed and spans approximately 30 lines across the fragment. The papyrus is aged, yellowed, and shows signs of wear and tear, including several holes and irregular edges.

